

THE NEXT GENERATION OF GLASS BEADS
SWARCO SOLIDPLUS



SWARCO | The Better Way. Every Day.

swarco 
Road Marking Systems

THE NEXT GENERATION OF GLASS BEADS



OUR PHILOSOPHY

OUR GUIDING PRINCIPLE

As a premium reflective glass-bead product, SWARCO SOLID**PLUS** is particularly durable, simple to apply, and ensures increased road safety thanks to its exceptional retroreflection.

OUR VISION

SWARCO SOLID**PLUS** sets the economical and technical benchmark worldwide for the next generation of reflective glass beads, with maximum performance in wet and dry conditions.

OUR VALUES


Innovation, Sustainability,
Reliability

OUR MOTTO


SWARCO SOLID**PLUS**
the next generation of glass beads

SWARCO SOLIDPLUS


The unique glass formulation combined with a state of the art beading process SWARCO SOLIDPLUS is the result of many years of research and development – an innovation from the SWARCO Road Marking Systems Division's Competence Center for Glass Technology and Marking Systems.

- 
- Diameters from 212 to 1400 µm
 - Excellent retroreflection values
 - Special glass composition


Crystal-clear advantages

- 
- Increased visibility and safety for the motoring public
 - Achieves excellent retroreflection values
 - Exceptionally durable thanks to the special glass composition
 - Significantly exceeds the required standard values even after several years of traffic exposure
 - Suitable for all road marking materials
 - Tailored precisely to individual customer requirements
 - Increased anti-skid values with high retroreflection possible

Visibly better

- 
- Retroreflection values of over 1000 mcd/m²*lx
 - Excellent retroreflection even in coloured road markings
 - Ideally suited for construction zone sites, accident black spots, zebra crossings
 - Excellent visibility at night and in wet and foggy conditions

Noticeably more cost-effective

- 
- Long service life
 - Reduced costs for remarking
 - Optimised price/performance ratio



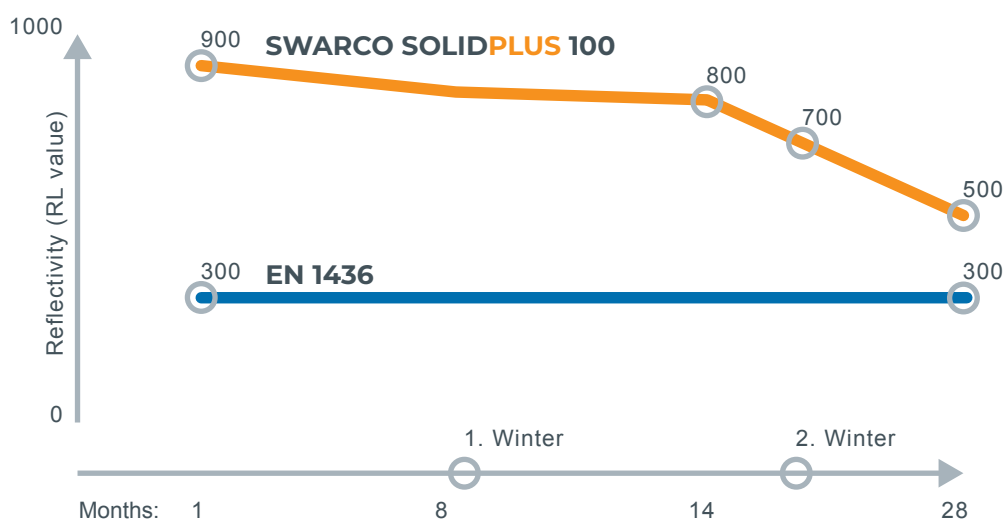
EXCELLENT RETRO- REFLECTION

Higher retroreflection means lower accident risk

The study "Investigation of longitudinal pavement marking retroreflectivity and safety" (Carlson, Park & Kang, 2013) verifies that every 100 mcd/m²*lx increase in retroreflection reduces the risk of accidents by up to 8.6 percent.

The SWARCO SOLIDPLUS bead brings the results of this study to the road. Thanks to its excellent retroreflectivity, this bead substantially increases road safety and can save lives. Particularly at night and in foggy or rainy weather, road markings can be seen much more clearly – precisely when they are most important to road users! The reflectivity (RL value) of SWARCO SOLIDPLUS is outstanding.

The chart proves impressively that the reflectivity of SWARCO SOLIDPLUS beads far surpasses even the strictest requirements of EN 1436 Class R5 over a period of 28 months. A first measurement was carried out one month after marking with SWARCO SOLIDPLUS beads. Further tests were performed after eight months, 14 months, and 28 months. They show clearly that the SWARCO SOLIDPLUS bead still has excellent retroreflection values even after several winters.



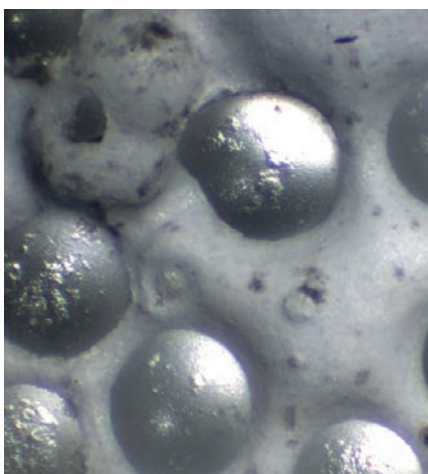
VERY DURABLE SWARCO SOLIDPLUS

SWARCO SOLIDPLUS impresses also in the abrasion test. This test was conducted on a rotating machine with three different bead types under identical conditions.

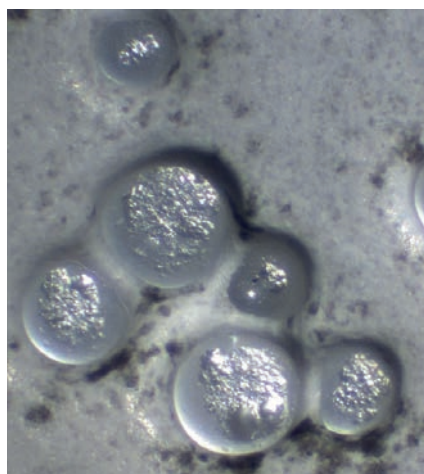
SWARCO SOLIDPLUS beads are not only more durable than standard and high-index beads, but also measurably more durable. SWARCO SOLIDPLUS beads therefore not only increase the safety of road users over a longer period, but also offer clear economic benefits.

The test also shows that SWARCO SOLIDPLUS beads have practically no defects, flaking, or signs of wear. All factors that underline the exceptional durability of SWARCO SOLIDPLUS beads. They are far tougher than other bead types.

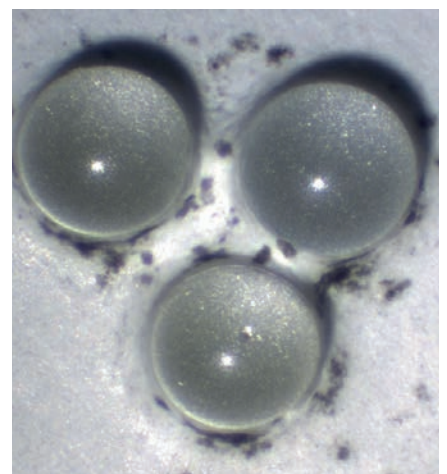
Roadmarking professionals can be certain that they will achieve the required values, and sustainably increase road safety thanks to the higher retroreflection.



Standard glass beads



High-index glass beads



SWARCO SOLIDPLUS

SWARCO | The Better Way. Every Day.

SHOWING THE WAY, WORLDWIDE

In 1969 we started out with the manufacture of tiny reflective glass beads. Today we have grown into the world's largest systems provider for road markings. Making roads safer and saving lives on a daily basis. Our high quality products and services, safely direct traffic flow from A to B, every day and night. On all roads, in any weather, and all from SWARCO.

We prepare for the future, by fusing knowledge with innovation at our Competence Center for Glass Technology and Marking Systems. So, even with smart and autonomous driving, we continue to blaze the trail of premium road markings to the world. Jump in and drive with us; we will be happy to help you find your ideal road marking solutions.

www.swarco.com/rms

Imprint:
Responsible for content: SWARCO Road Marking Systems,
www.swarco.com/rms | Idea, design, and artwork: Kommhaus,
www.kommhaus.com | Photos: SWARCO Road Marking Systems,
Wolfgang Stadler, shutterstock | Print: Druckwerkstatt Handels GmbH
Subject to change without notice. | No liability for errors or misprints.



Road Marking Systems

